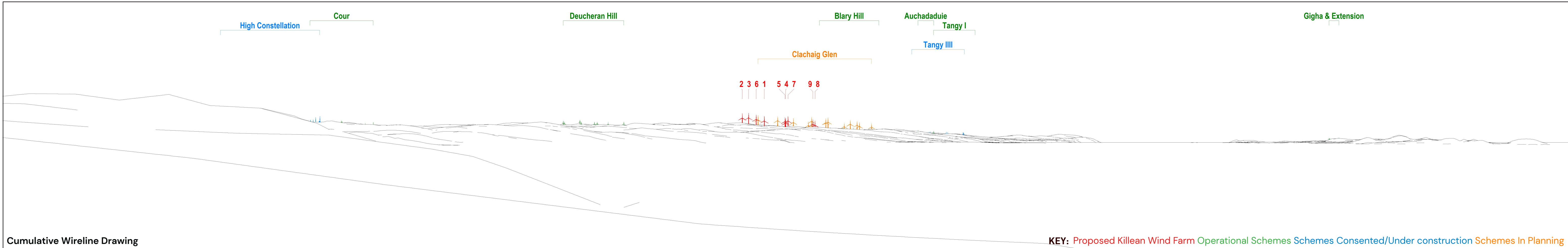




Existing View

Extent of 53.5 degrees planar panorama image



Cumulative Wireline Drawing

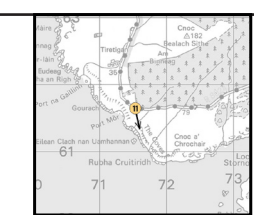
KEY: Proposed Killean Wind Farm Operational Schemes Schemes Consented/Under construction Schemes In Planning

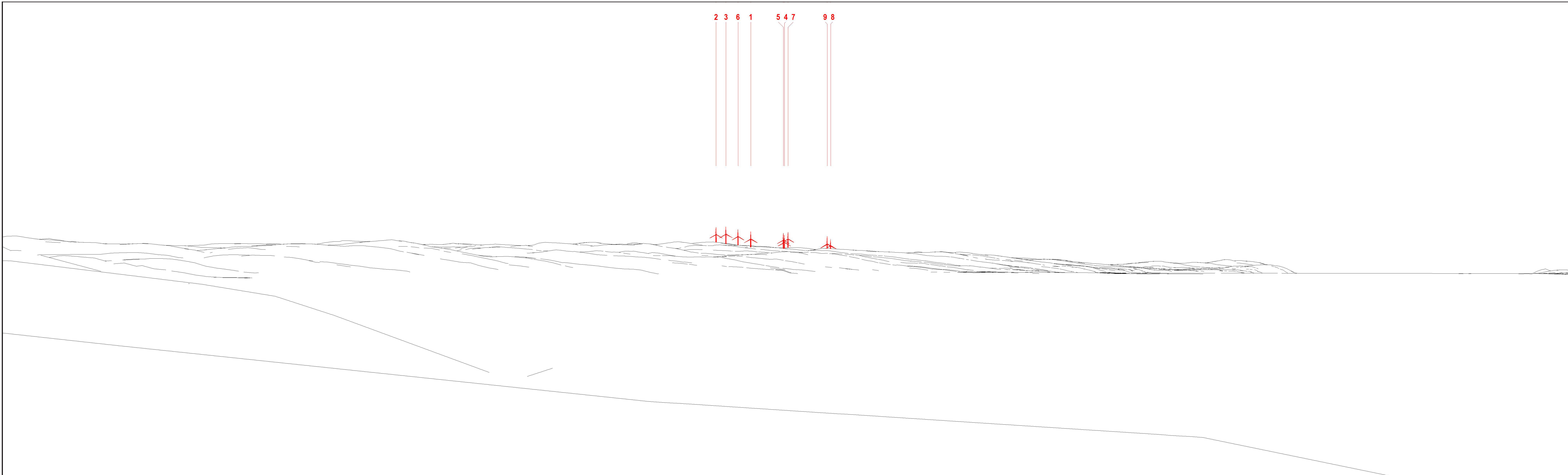
Viewpoint Information
 OS Reference: E171535 N661644
 Ground level: 37m (AOD)

Distance to nearest turbine: 16,182m (T9)
 Bearing to centre of photograph: 177°

Angle of view: 90° (cylindrical)
 Principal distance: 812.5mm
 Paper size: 841 x 297 mm (half A1)
 Correct printed image size: 820 x 260mm

Camera: Nikon Corporation
 Lens: 50mm Fixed Focal Lens
 Height: 1.5m
 Date & Time: 03/11/2023 08:50





Wireline Drawing

KEY: Proposed Killean Wind Farm

Viewpoint Information
 OS Reference: E171535 N661644
 Ground level: 37m (AOD)

Distance to nearest turbine: 16,182m (T9)
 Bearing to centre of photograph: 177°

Angle of view: 53.5° (planar)
 Principal distance: 812.5mm
 Paper size: 841 x 297 mm (half A1)
 Correct printed image size: 820 x 260mm

Camera: Nikon Corporation
 Lens: 50mm Fixed Focal Lens
 Height: 1.5m
 Date & Time: 03/11/2023 08:50



KILLEAN WIND FARM



(Sheet B)
 LVIA Viewpoint 11 – B8024, Knapdale
 Figure 5.47 Drawing number P23-0967



Photomontage

Viewpoint Information
KILLEAN WIND FARM

OS Reference: E171535 N661644
Ground level: 37m (AOD)

Distance to nearest turbine: 16,182m (T9)
Bearing to centre of photograph: 177°

Angle of view: 53.5° (planar)
Principal distance: 812.5mm
Paper size: 841 x 297 mm (half A1)
Correct printed image size: 820 x 260mm

Camera: Nikon Corporation
Lens: 50mm Fixed Focal Lens
Height: 1.5m
Date & Time: 03/11/2023 08:50



(Sheet C)
LVIA Viewpoint 11 – B8024, Knapdale
Figure 5.47 Drawing number P23-0967