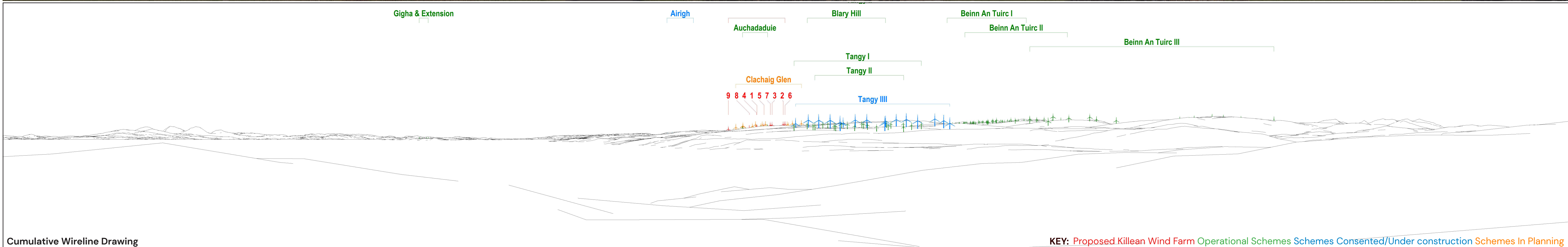




Existing View

Extent of 53.5 degrees planar panorama image



Cumulative Wireline Drawing

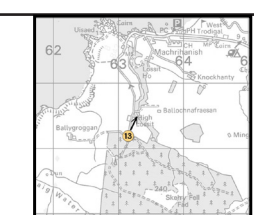
KEY: Proposed Killeean Wind Farm Operational Schemes Schemes Consented/Under construction Schemes In Planning

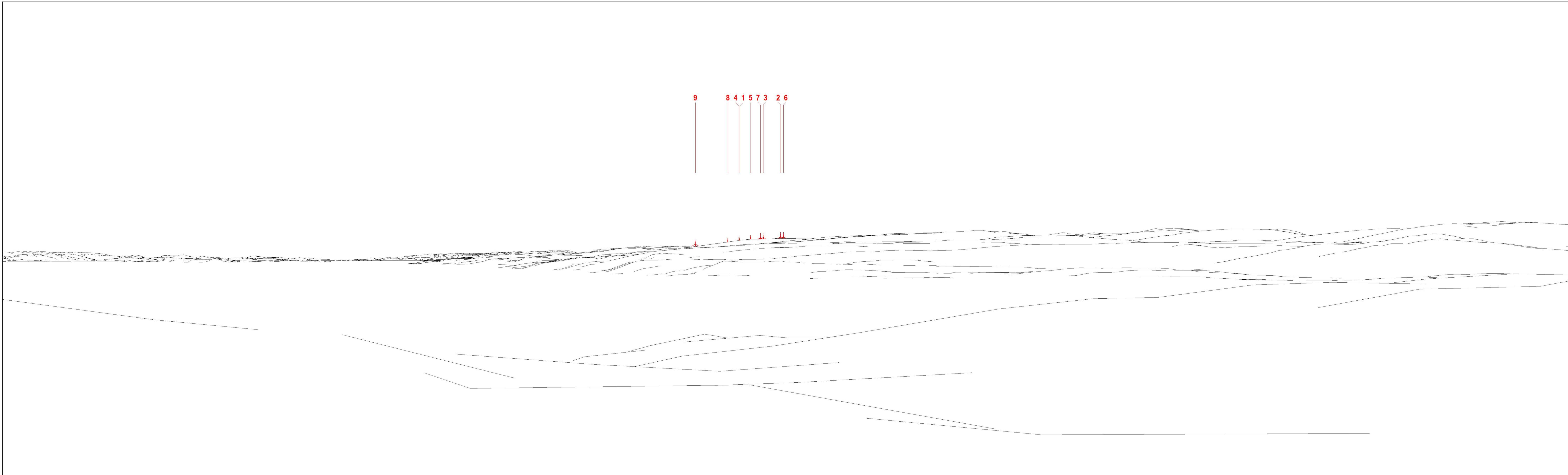
Viewpoint Information
 OS Reference: E163152 N619188
 Ground level: 122m (AOD)

Distance to nearest turbine: 26,065m (T7)
 Bearing to centre of photograph: 21.85°

Angle of view: 90° (cylindrical)
 Principal distance: 812.5mm
 Paper size: 841 x 297 mm (half A1)
 Correct printed image size: 820 x 260mm

Camera: Nikon Corporation
 Lens: 50mm Fixed Focal Lens
 Height: 1.5m
 Date & Time: 10/10/2023 12:10





Wireline Drawing

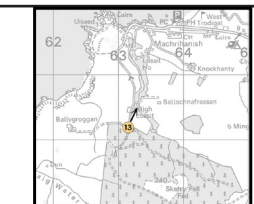
KEY: Proposed Killean Wind Farm

Viewpoint Information
 OS Reference: E163152 N619188
 Ground level: 122m (AOD)

Distance to nearest turbine: 26,065m (T7)
 Bearing to centre of photograph: 21.85°

Angle of view: 53.5° (planar)
 Principal distance: 812.5mm
 Paper size: 841 x 297 mm (half A1)
 Correct printed image size: 820 x 260mm

Camera: Nikon Corporation
 Lens: 50mm Fixed Focal Lens
 Height: 1.5m
 Date & Time: 10/10/2023 12:10



(Sheet B)
 LVIA Viewpoint 13 - High Lossit, south of Machrihanish
 Figure 5.49 Drawing number P23-0967



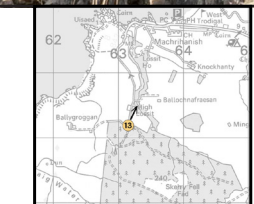
Photomontage

Viewpoint Information OS Reference: E163152 N619188
Ground level: 122m (AOD)

Distance to nearest turbine: 26,065m (T7)
Bearing to centre of photograph: 21.85°

Angle of view: 53.5° (planar)
Principal distance: 812.5mm
Paper size: 841 x 297 mm (half A1)
Correct printed image size: 820 x 260mm

Camera: Nikon Corporation
Lens: 50mm Fixed Focal Lens
Height: 1.5m
Date & Time: 10/10/2023 12:10



KILLEAN WIND FARM



(Sheet C)
LVIA Viewpoint 13 - High Lossit, south of Machrihanish
Figure 5.49 Drawing number P23-0967